

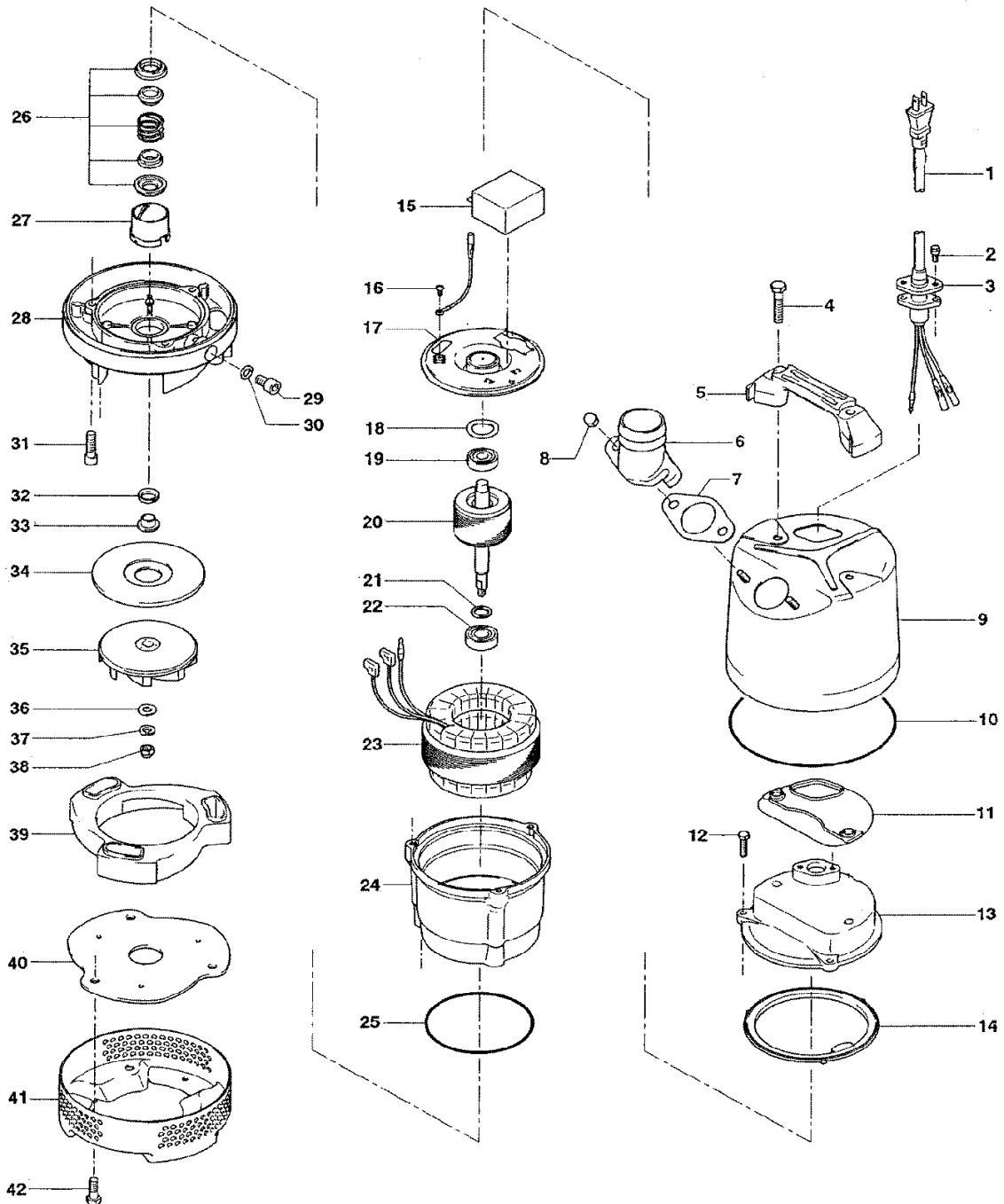
PARTS LIST		PORTABLE DEWATERING PUMP			5/5/2022	
ITEM	PART No.	DESCRIPTION	QTY	SIZE	MATERIAL	NOTES
1	001-944-11	Cabtyre Cable Set (32') 110V-60Hz	1	STOW3x1.25mm2(CS A)	LB	replaces OLD part# 001-943-23
		Cabtyre Cable Set (32') 220V-60Hz	1			
2	140-427-17	Hex.Bolt (w/Plain Washer)	2	M5x15	SUS304	
3	003-190-10	Gland	1		SUS316	
4	140-000-13	Hex.Bolt (w/Plain Washer)	2	M8x65	SUS304	
5	068-000-06	Handle	1	LB-250/480-52/62	Resin	
6	032-426-18	Hose Coupling 2"	1	NPT-2(LB-480-51/61)	ADC	
	032-000-75	Hose Coupling 3" OPTIONAL	1	NPT-3	ADC	3" OPTION
7	121-587-17	Packing	1	LB-250/480-51/61	NBR	*
8	141-144-10	Hex.Nut (w/Flange)	2	M8	SUS304	
9	065-382-13	Outer Cover	1	LB-250/480-51/61	SPC	
10	122-453-16	O-Ring	1	172xd2.7	NBR	*
11	121-002-09	Packing	1	LB3-250/480	Synthetic Rubber	* replaces OLD part# 121-434-18
12	140-396-16	Hex.Bolt (w/Plain Washer)	3	M6x20	SUS304	
13	051-282-19	Head Cover	1		ADC	
14	121-546-14	Packing	1	d120xd142x6.2t	NBR	*
15	076-159-13	Capacitor 110V 60Hz	1	270VAC(three terminals)		
15	076-162-19	Capacitor 220V 60Hz	1	500VAC(three terminals)		
16	143-203-14	Pan Screw	1	M4x5	C360	
17	050-486-12	Motor Bracket	1		SECD	
18	142-192-16	Wave Washer	1	6201(D=32,t=0.4)	SK5	
19	052-100-15	Bearing	1	6201ZZC3		
20	055-889-14	Rotor	1Set	w/Bearing		
21	061-180-17	Bearing Collar	1	d15.1xd20x1.6t	SS	
22	052-101-16	Bearing	1	6202ZZC3		
23	056-C67-13	Stator 110V-60Hz (USA)	1Set	w/Miniature Protector		
	056-009-39	Stator 220V-60Hz (USA)	1Set	w/Miniature Protector		replaces OLD part# 056-C69-15
24	064-508-14	Motor Frame	1		ADC	
25	122-133-17	O-Ring	1	G-110(109.4xd3.1)	NBR	*
26	025-291-10	Mechanical Seal	1	W-14VL	SSiC	
27	030-000-09	Oil Lifter	1	W-14VL	Resin	
28	029-000-70	Oil Casing	1	LB-250/480-51/61	ADC	
29	035-124-12	Oil Plug	1	M10x15	SUS304	

PARTS LIST		PORTABLE DEWATERING PUMP			5/5/2022	
ITEM	PART No.	DESCRIPTION	QTY	SIZE	MATERIAL	NOTES
30	121-246-11	Packing	1	d10.3xd16x2t	PE	*
31	140-252-19	Hex.Socket Cap Bolt	3	M6x20	SUS304	
32	122-441-11	V-Ring	1	VR-14	NBR	
33	071-292-14	Shaft Sleeve	1	LB3-250/480	SUS304	
34	031-000-01	Wear Ring	1	LB-250/480-51/61	SPC+Rubber	
35	021-007-44	Impeller (60Hz)	1	LB-480-62(For 60Hz)	Urethane Rubber	
36	142-127-10	Plain Washer	1	M8	SUS304	
37	142-163-18	Spring Washer	1	M8	SUS304	
38	141-030-12	Hex.Cap Nut	1	M8	SUS304	
39	020B8919	Pump Casing	1	LB-250/480-51/61	Synthetic Rubber	
40	022-001-28	Suction Cover	1	LB-250/480-52/62	SPC+Rubber	
41	023-547-18	Strainer Stand	1	LB-250/480-51/61	SPCC	
42	140-000-14	Hex.Bolt (w/Plain Washer)	3	M8x20	SUS304	
	173-567-12	Packing O-Ring Set	1Set	(Marked by *)		
7	121-587-17	Packing (Hose Coupling)	1	LB-250/480-51/61	NBR	*
10	122-453-16	O-Ring (Out.Cover/O.Casing)	1	172xd2.7	NBR	*
11	121-002-09	Packing	1	LB3-250/480	Synthetic Rubber	* replaces OLD part# 121-434-18
14	121-546-14	Packing (Head Cover/M.Frame)	1	d120xd142x6.2t	NBR	*
25	122-133-17	O-Ring (M.Frame/M.Bracket)	1	G-110(109.4xd3.1)	NBR	*
30	121-246-11	Packing (Oil Plug)	1	d10.3xd16x2t	PE	*
		Lubricant		Turbine Oil VG32 155ml		

PARTS LIST		PORTABLE DEWATERING PUMP					5/5/2022
ITEM	PART No.	DESCRIPTION	QTY	SIZE	MATERIAL	NOTES	

EXPLODED VIEW

LB-250/480-52/62
LB-250/480-53/63



* Indicates items included in set



MODEL **LB480-62**

PARTS LIST		PORTABLE DEWATERING PUMP			5/5/2022	
ITEM	PART No.	DESCRIPTION	QTY	SIZE	MATERIAL	NOTES